

Exclusive Doors

GERMAN  ENGINEERED



With over 8 years of experience, **Projetta by Weiku** is a pioneer in the manufacture of ACM (compound aluminum) doors, taking its products to the four corners of Brazil and the world.

The passion for designing and developing doors is a force that drives the search for new solutions, trends, technology, and design, placing the company at the forefront of the market.

The use of state-of-the-art and extremely precise equipment means that impeccable finishes are produced on doors that demand a high standard in every detail.

The special sized doors manufactured by **Projetta by Weiku** have a double sealing system, ensuring total impermeability around the entire perimeter of the door. This is possible thanks to the use of Q-LON technology, an imported high-performance material, present in the main frames in the world.

Our mission

To expand the ACM door market in Brazil and take our products to the four corners of the world.

Our vision

To always stay ahead, being a reference in the world market in aluminum doors - presenting new products, variety of models, quality and technology.

Our values

Transparency, innovation, creativity and quality.

Passion for
developing
products with
technology
and high
standard in
every detail.

FELIPE XAVIER
Founder and Director of Projetta



Projetta ALUMINUM

We are waiting for you!

Our products are installed in Brazil and in several countries around the world.

South America

Argentina
Brazil

North America

Canada
USA
Mexico

Central America

Aruba
Haiti
Jamaica
Dominican Republic

Europe

Belgium
France
Netherlands
North Macedonia
Switzerland

Middle East

Bahrain
United Arab Emirates
Kuwait
Oman
Qatar

Africa

Senegal
Sierra Leone

Australia & Oceania

Australia

South Asia

Pakistan



ARND E. KILIAN
Weiku Founder and Director

Your EXCLUSIVE DOOR

Models of doors

- With external handles (see page 10).
- With pocket handles (see page 13).



Serial items from your door

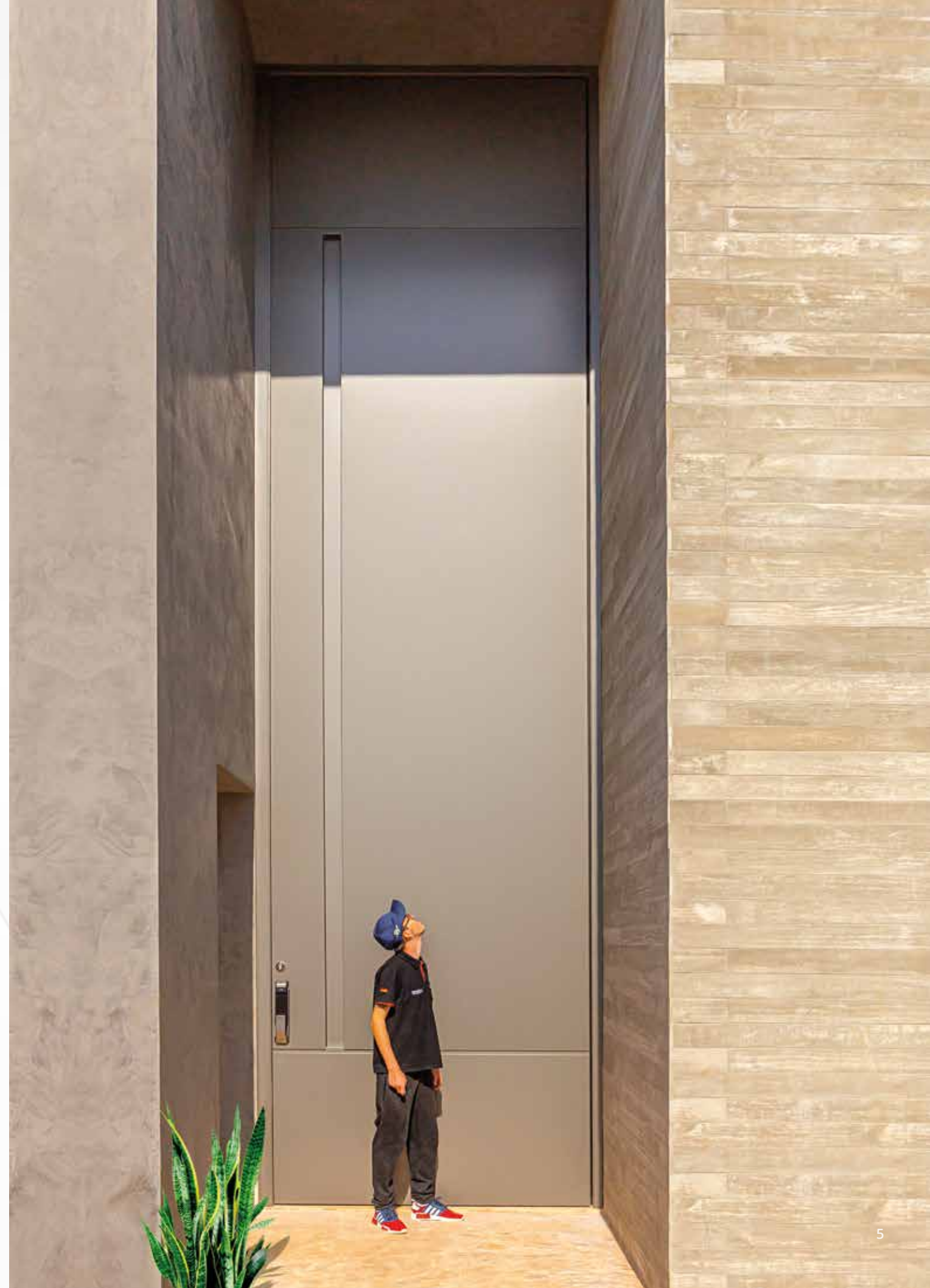
- Semi-Gloss colors (see page 27).
- Metallised colors (see page 28).
- 100% aluminum door skin structure with reinforced profiles.
- 4mm thick ACM sheet (inner and outer) with PVDF Topcoat 70% and 0.3mm aluminum foil (inner and outer). Further information about ACM (see page 26).
- Doorstop with system for leveling fit (see availability of use of casing).
- Pivot in stainless steel 304 with ball and bearings for loads from 150 to 1000 kg.
- Double auto-seal (eliminates top and bottom crevices).
- Q-LON across the entire height of the skin and portal (eliminates side crevices).
- Security lock from 4 to 24 locking points (depending on door size).
- 3 keys with computer encoding.
- External handle (Black, Polished or Brushed) 1500 mm.

Available accessories (price upon request)

- Stainless steel 304 handles from 1500 to 5000 mm.
- Digital locks (Smart Lock).
- Spy hole.
- Pivot with Soft Close (Fritsjurgens).

Available Colors (price upon request)

- Solid colors (see page 27).
- Wooden / Special colors (see page 29).



Pivot DOORS

Getting to know the product and its advantages

Used in Brazil for over 20 years, the doors with a pivot system are ideal to be installed at the entrance of houses or apartments - adding aesthetics and elegance to any type of design. In this system, a part of the door is designed for the exterior and another for the interior, which allows the choice of larger models, with a modern and bold design.

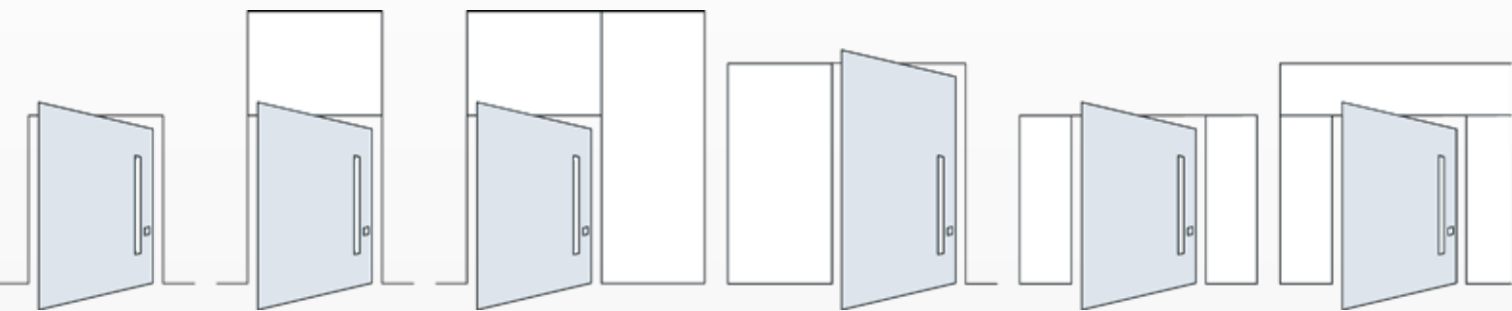
One of the great advantages of swing doors is that all their weight is on the lower pivot. Thus, the weight limitation existing in the traditional system, which uses hinges, is eliminated. In addition to its elegant axle system, the pivot system is built into the portal and attached to the bottom and top of the door, hiding the hardware and providing a more modern look - different from the traditional system where the hinges are visible.

Pivot doors are also easier to install compared to traditional doors. The existence of two support pivots provides a perfect fit for the doors. The higher your door, the greater the feeling of space given to the environment.

The internal structure of the doors is all aluminum - noble material, light and resistant. The accessories are manufactured in 304 stainless steel (screws, pivoting system and locks) making the doors resistant to sun, rain, rust and weathering.

What are the main benefits?

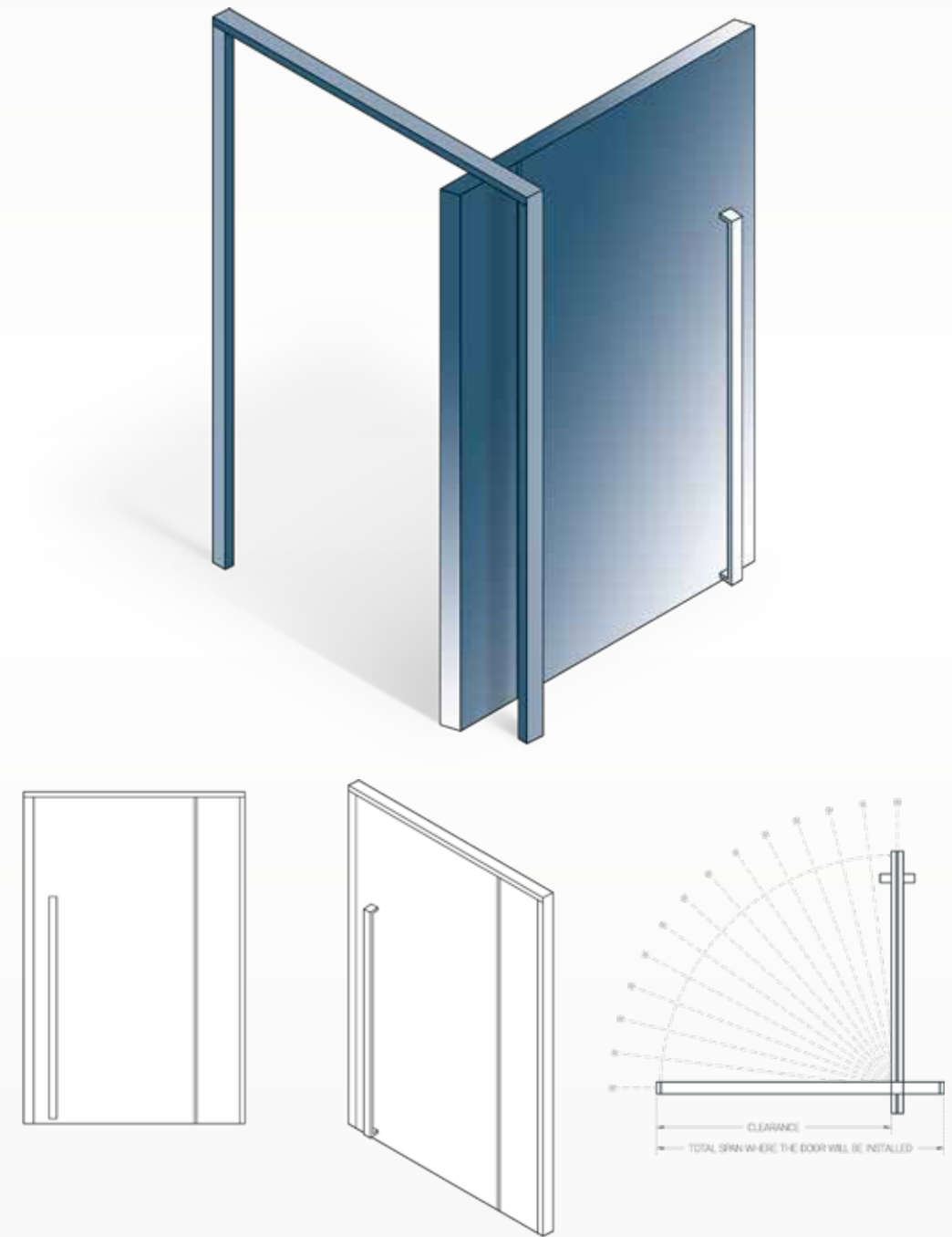
- 100% aluminum structure.
- External coating 100% in ACM.
- Seal around the perimeter of the door.
- Upper and lower automatic sealing system.
- Resistant to sun and rain.
- Painting warranty of up to 15 years.
- Low maintenance.
- Modern design.
- Accessories made of stainless steel 304.
- High technology and durability.



Pivot SYSTEM

Functioning characteristics

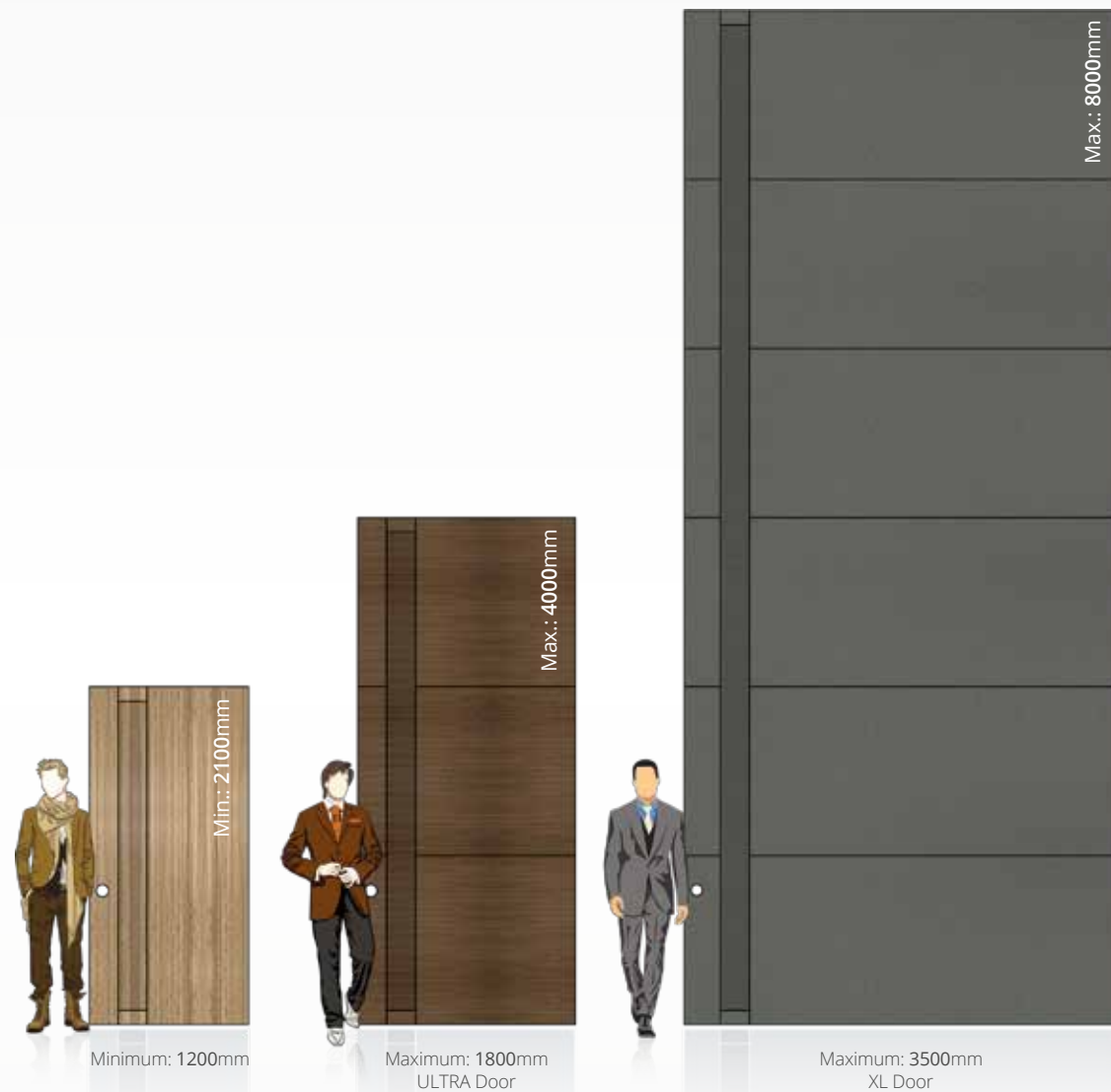
In the pivoting system, the doorskin rotates around a vertical axis (the pivot) instead of hinges (traditional system). The fastening pins are placed above and below the doorstop, ensuring greater lightness and flexibility to the door.



NOTE: Check the clearance according to the total span where the door will be installed.

Our EXTREMES

Product sizes



Doors **ULTRA DOOR**

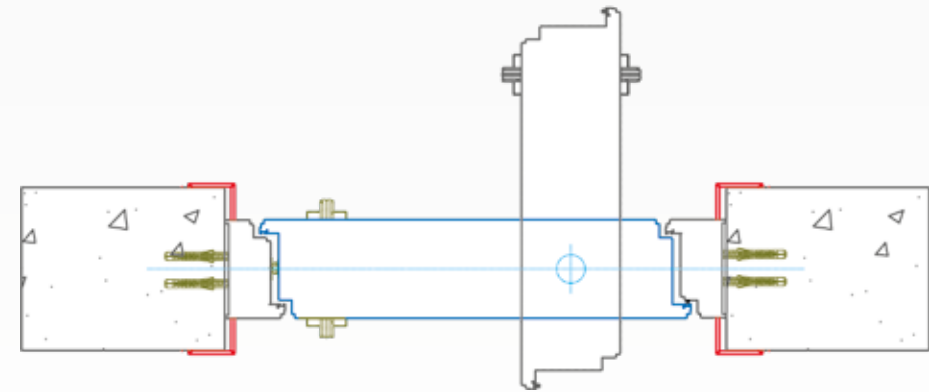
The maximum measurement of 1800 x 4000 mm of opening may be reached on a single skin.
ULTRA Doors reach a maximum thickness of 100 mm and their pivot system supports up to 250 kg.

Doors **XL DOOR**

The maximum measurement of 3500 x 8000 mm of opening may be reached on a single skin.
XL Doors reach a maximum thickness of 120 mm and their pivot system supports up to 1000 kg.

Doorstop system CASING

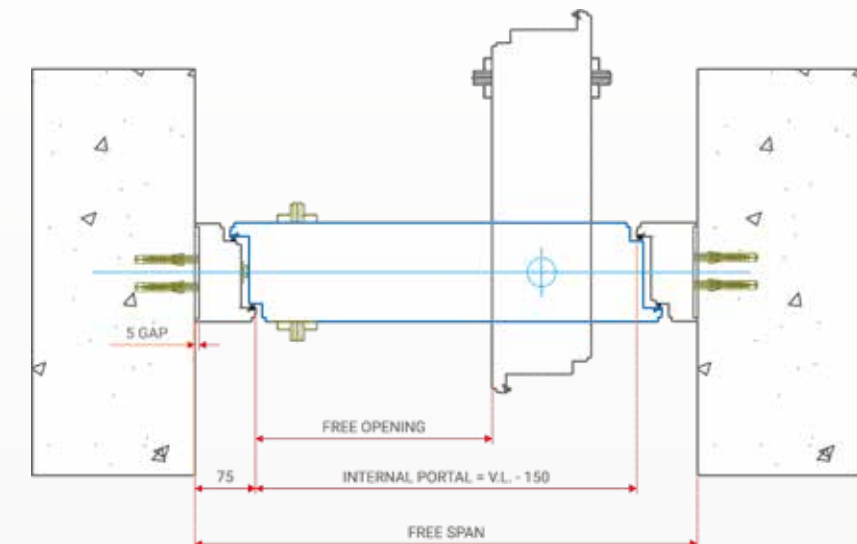
System with casing



For the installation of the casing system (highlighted in red in the drawing above), space is required to glue it. Check out its main features:

- Standard sheets with maximum measurements of 5000 mm in height (the casing is not installed in larger spans due to necessary seams).
- Standard casing with 80 mm.
- Exclusive system with adjustment and alignment channel, where any imperfection in the wall is corrected, eliminating the use of silicone in the installation.

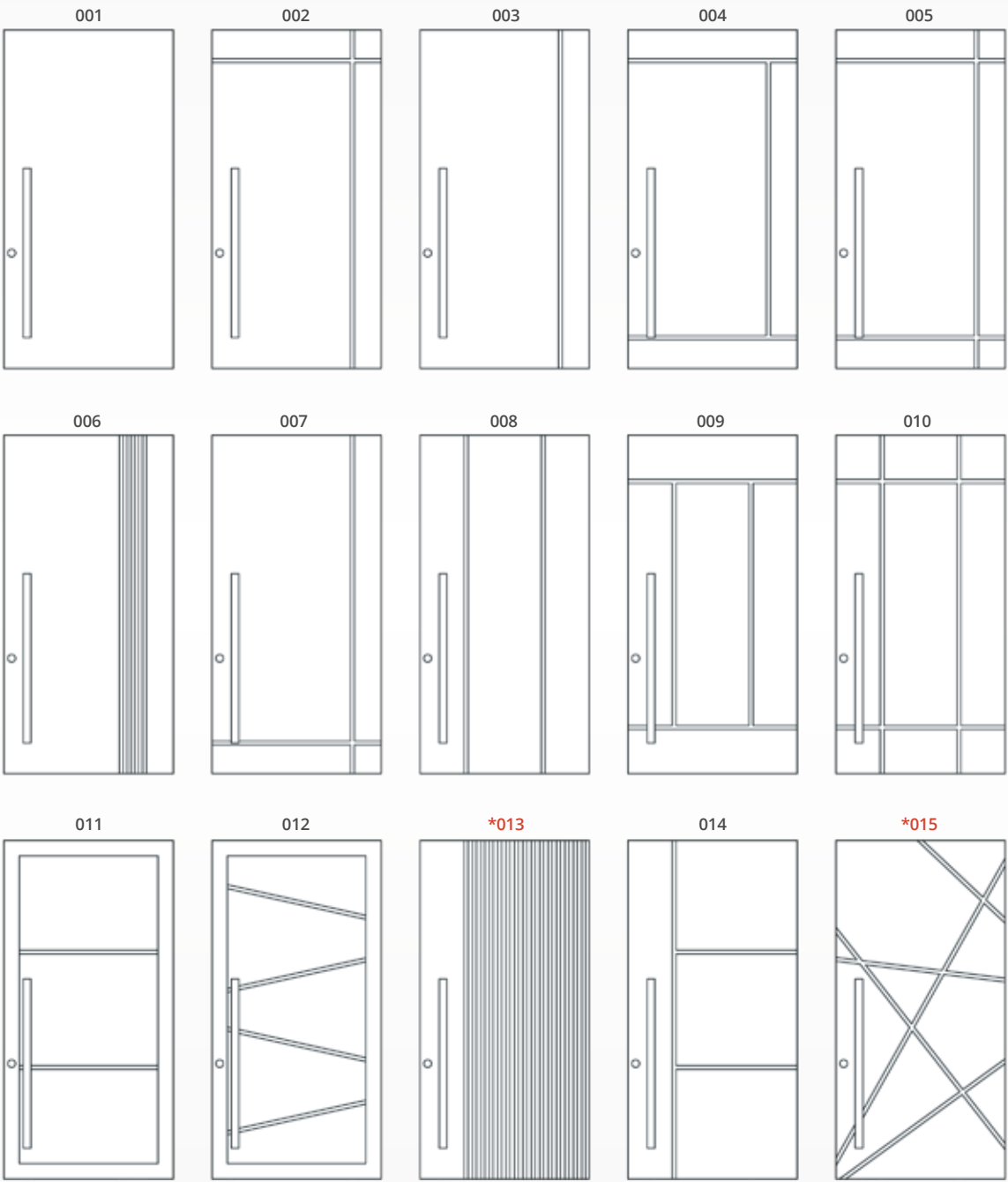
System without casing



According to the drawing above, in this case, there is no space for installing the casing system. To eliminate the gap between the portal and the wall, an ACM tape (in the same color as the door) is installed, thus correcting and eliminating the use of silicone in the installation.

External
HANDLES

Available door models



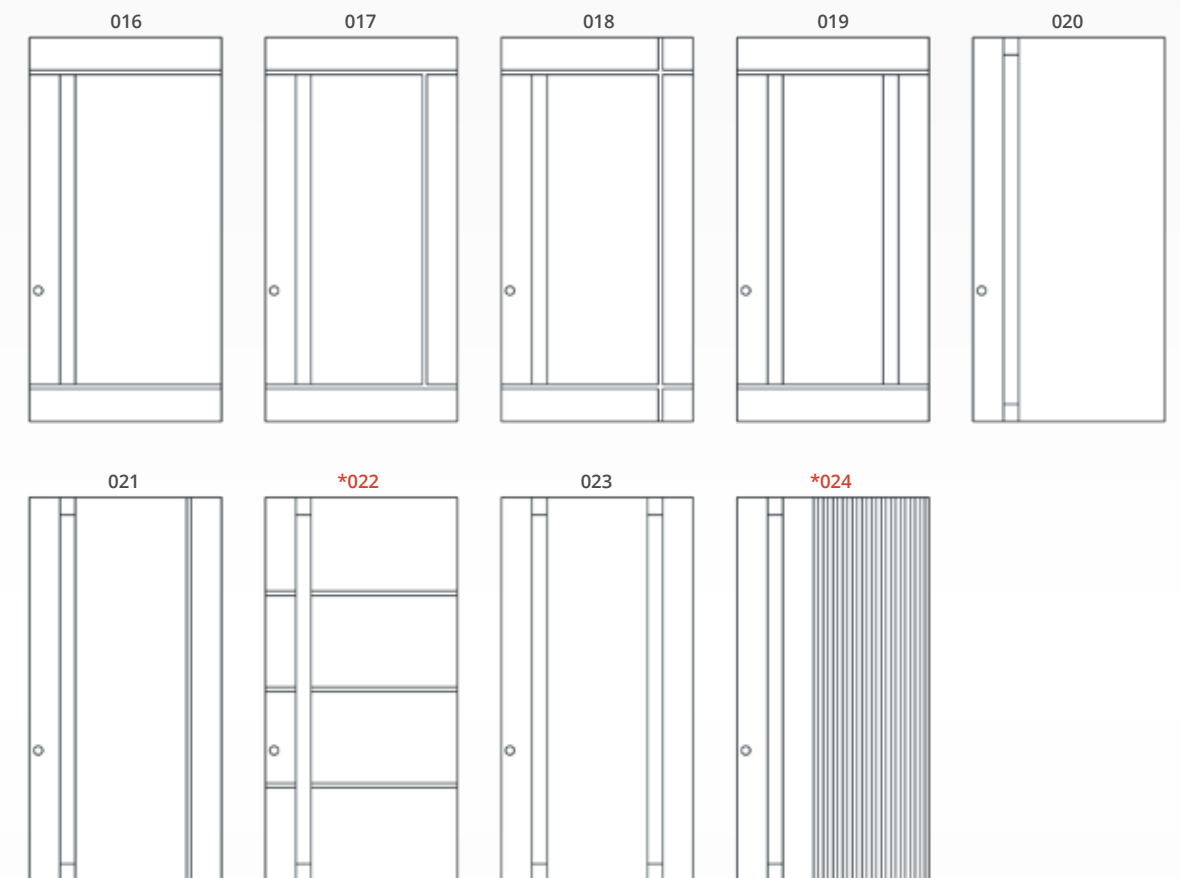
NOTE: Pay attention to the height and width limits of the boards. Dimensions: 1500 x 5000 mm.
External handle in 304 stainless steel, price upon request. *Models 013 and 015 have a special price.





Pocket HANDLES

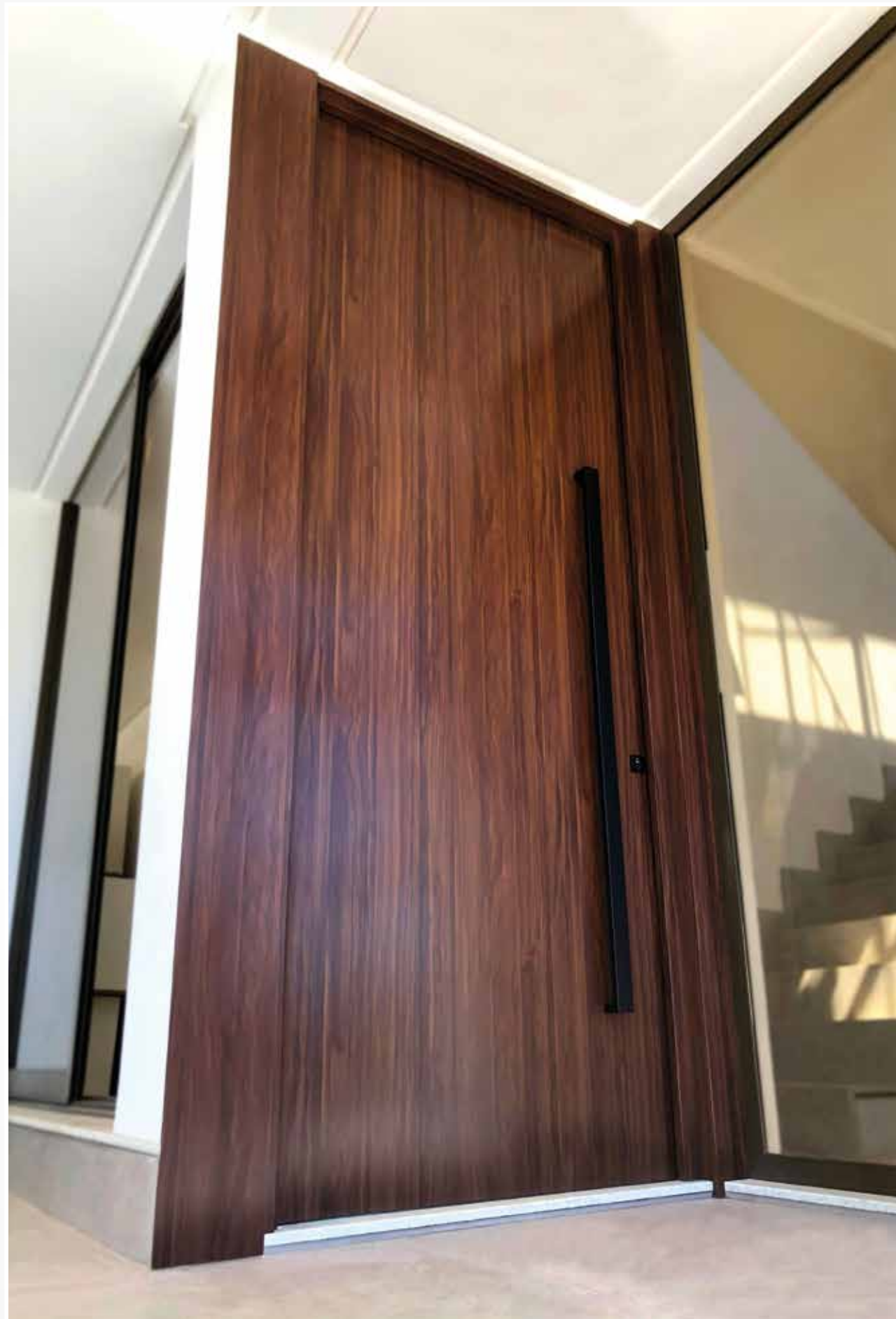
Available door models



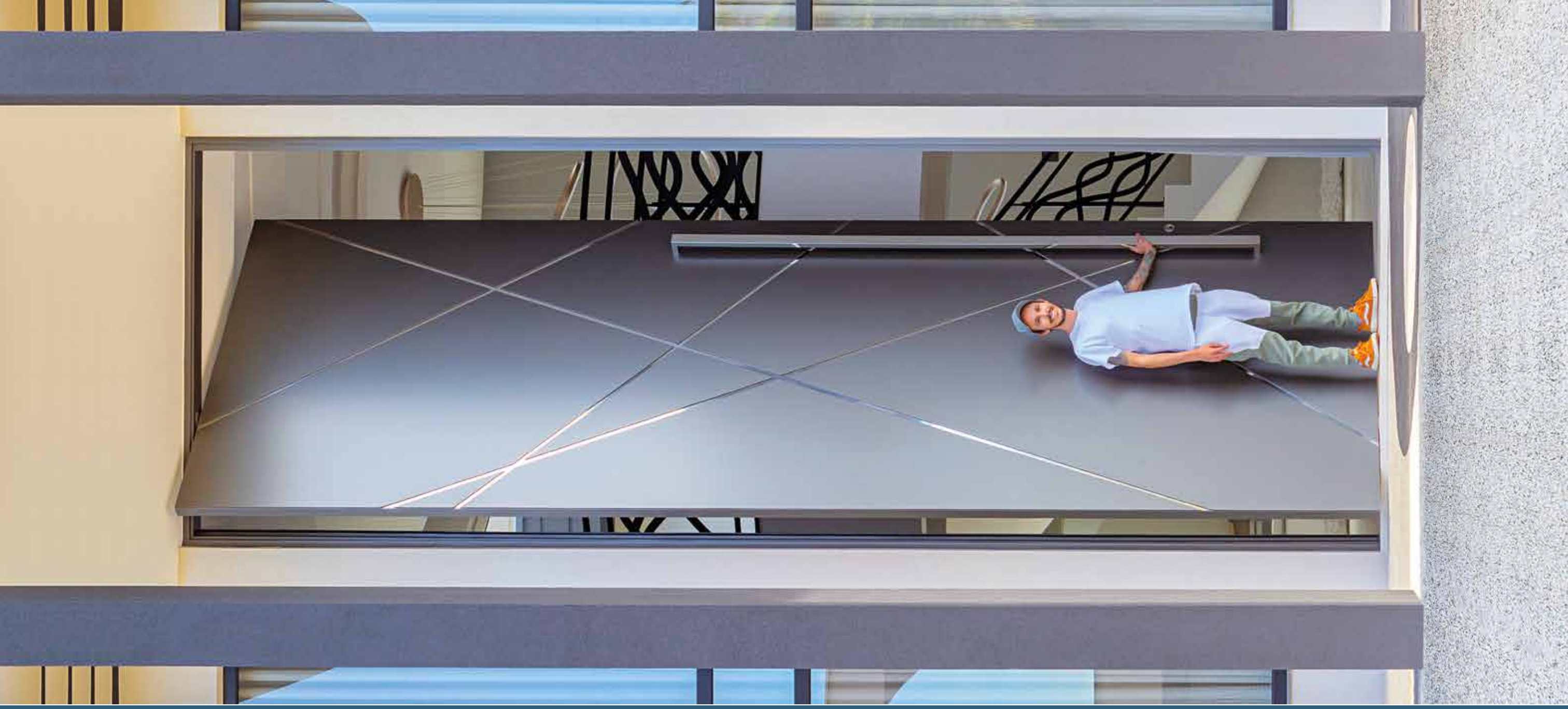
NOTE: Pay attention to the height and width limits of the boards. Dimensions: 1500 x 5000 mm.
Pocket handle, price upon request. *Models 022 and 024 have a special price.

Your
home's
business
card.





Proietta
exclusive
doors,
in the size
of your
dreams.

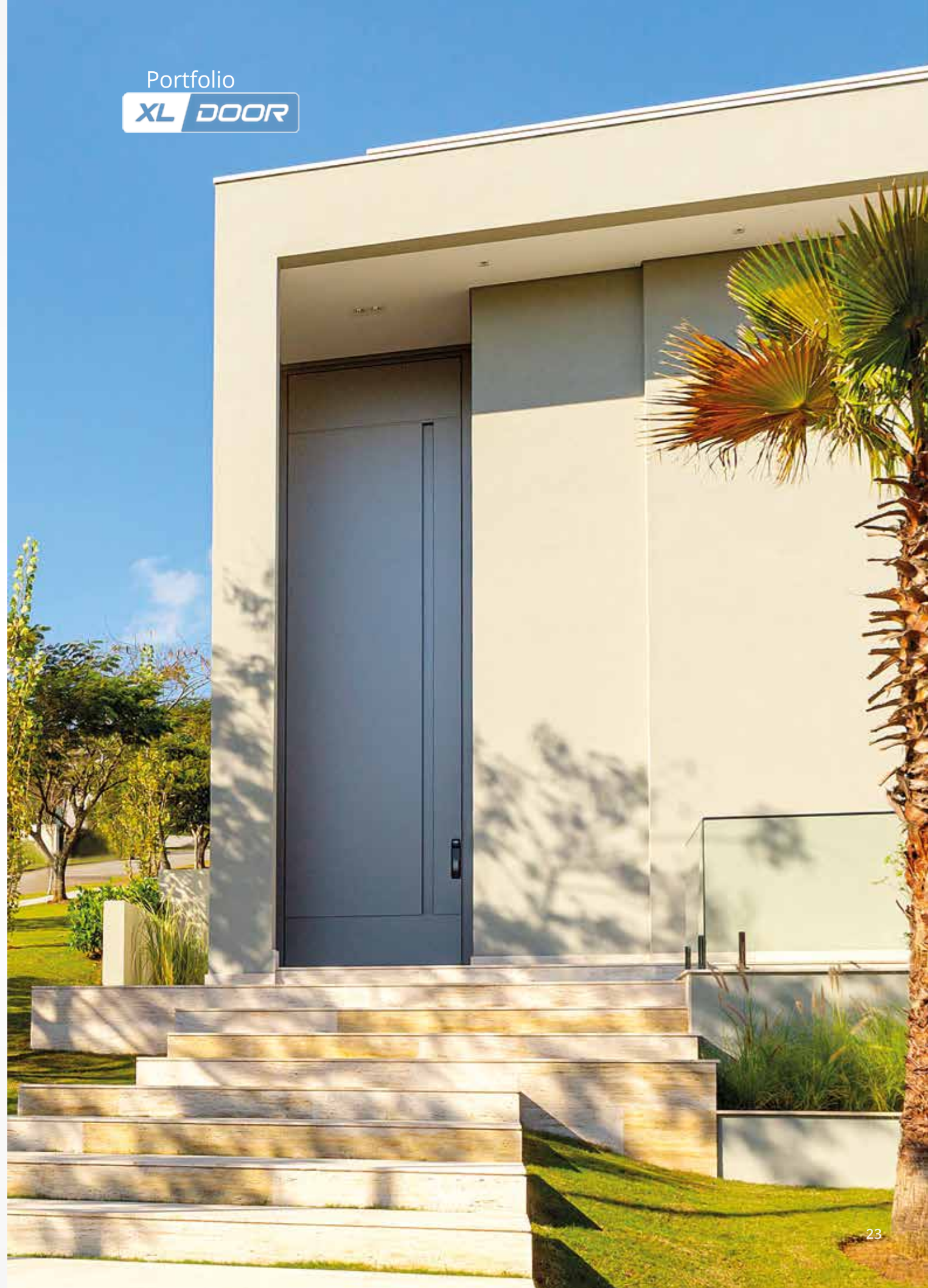


Doors
with the
size your
design
deserves.





22 Portfolio XL DOOR





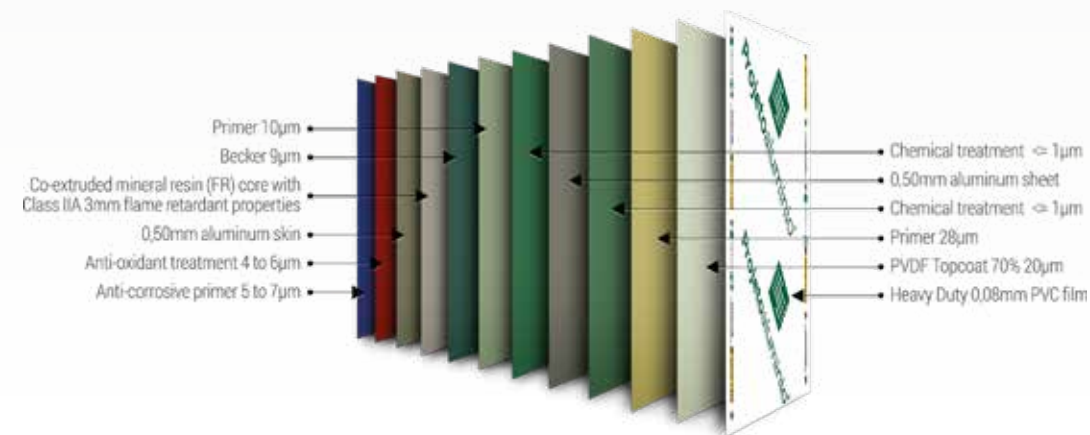
Portfolio XL DOOR

The coating of your door

MEET ACM

What is ACM

Composite Aluminum Material - ACM is a painted aluminum coating, composed of two aluminum sheets with a low density polyethylene thermoplastic core. It uses a sophisticated gluing process, which involves several adhesives at high temperatures. The painted surface of the aluminum sheet is coated with PVDF KYNAR 500 (70%) or polyester base. The result is a product with excellent uniformity, strength, and beauty, used for covering façades, pillars, canopies, totems, logos and much more.



Applications

ACM has several applications. As it is a material with great static appeal and easy handling, it allows the design professional to freely use his/her creativity. Please find below are some application examples:

- Coating of building facades, columns, beams, indoor areas and furniture.
- Signs, displays, signs, fair stands and kiosks.
- Gas station fronts, ceilings and partitions.

Benefits

ACM sheets are sold in a wide variety of colors and textures. They provide unparalleled beauty, high durability, quick installation, ease of handling and cleaning.

- Low weight reducing its structural load.
- Possibility of manufacturing special colors or measures, upon minimum batch.
- Possibility of manufacturing with flame resistant mineral core (Class II-A).
- Flat surface guarantee, even in larger dimensions.
- Stiffness with excellent weight/strength ratio.
- They may be bent or curved using suitable tools.
- Paints with varied resins, which ensure strength and durability.
- Stability with better thermal and acoustic performance.

Warranty period

Aluminum composite panels will have paint guarantees for a period of fifteen (15) years, when KYNAR resin is used.

Color samples

SOLID / SEMI-GLOSS



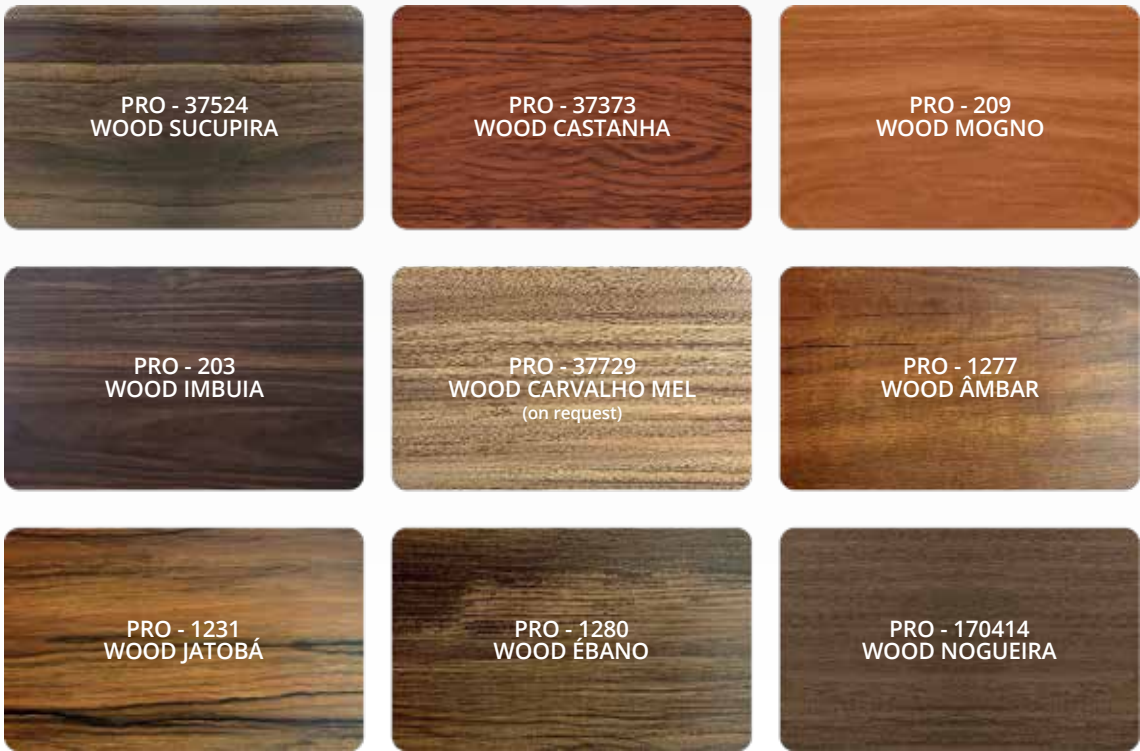
NOTE: Some Projetta color options may be similar to Weiku do Brasil profiles. Color samples may vary depending on the characteristics of the screen or graphic print.

Color samples
METALLIC



NOTE: Some Proietta color options may be similar to Weiku do Brasil profiles.
Color samples may vary depending on the characteristics of the screen or graphic print.

Color samples
WOODEN



Color samples
SPECIAL



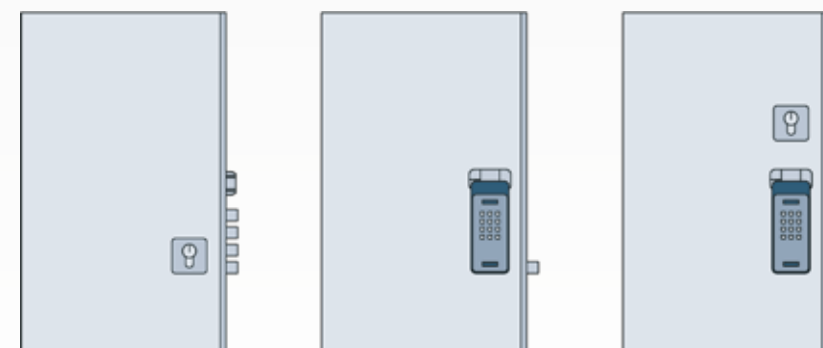
NOTE: Some Proietta color options may be similar to Weiku do Brasil profiles.
Color samples may vary depending on the characteristics of the screen or graphic print.



Accessories LOCKS

Various types and models to choose from

From the simplest to multipoint models, with 24-pin lock. Digital locks may be installed, opening by code, card or fingerprint.



Digital locks

SHP-DP609



FR-630



NOTE: We do not guarantee any digital locks, whether purchased by the customer or not. Only locks with central locking may be used on our doors, in case of doubt, please contact us.

Accessories LOCKS

KESO - Multipoint

Currently, safety is very important to our customers. For this reason, we offer KESO multipoint locks from 4 to 24 points - with computerized keys. Moreover, our strikes and deadbolts are made of stainless steel 304 with Swiss technology, bringing much more security.



Accessories HANDLES

Made of 304 stainless steel

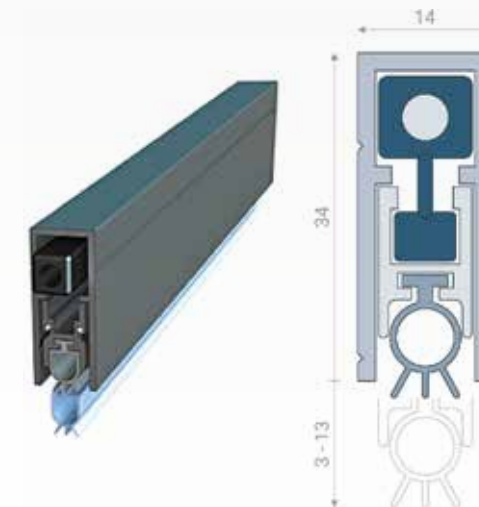


- Metalon handles 50 x 30 mm.
- Available finishes: Black / Polished / Brushed.
- Available measures: 1500 mm Standard / 2000 mm / 3000 mm / 4000 mm / 5000 mm.
- Other dimensions on request.

Accessories SEALS

Door Seals

For a more efficient sealing, we use an automatic system at the bottom and top of the door that is activated when it closes. This system prevents dust, water and insects from coming in.



Q-LON

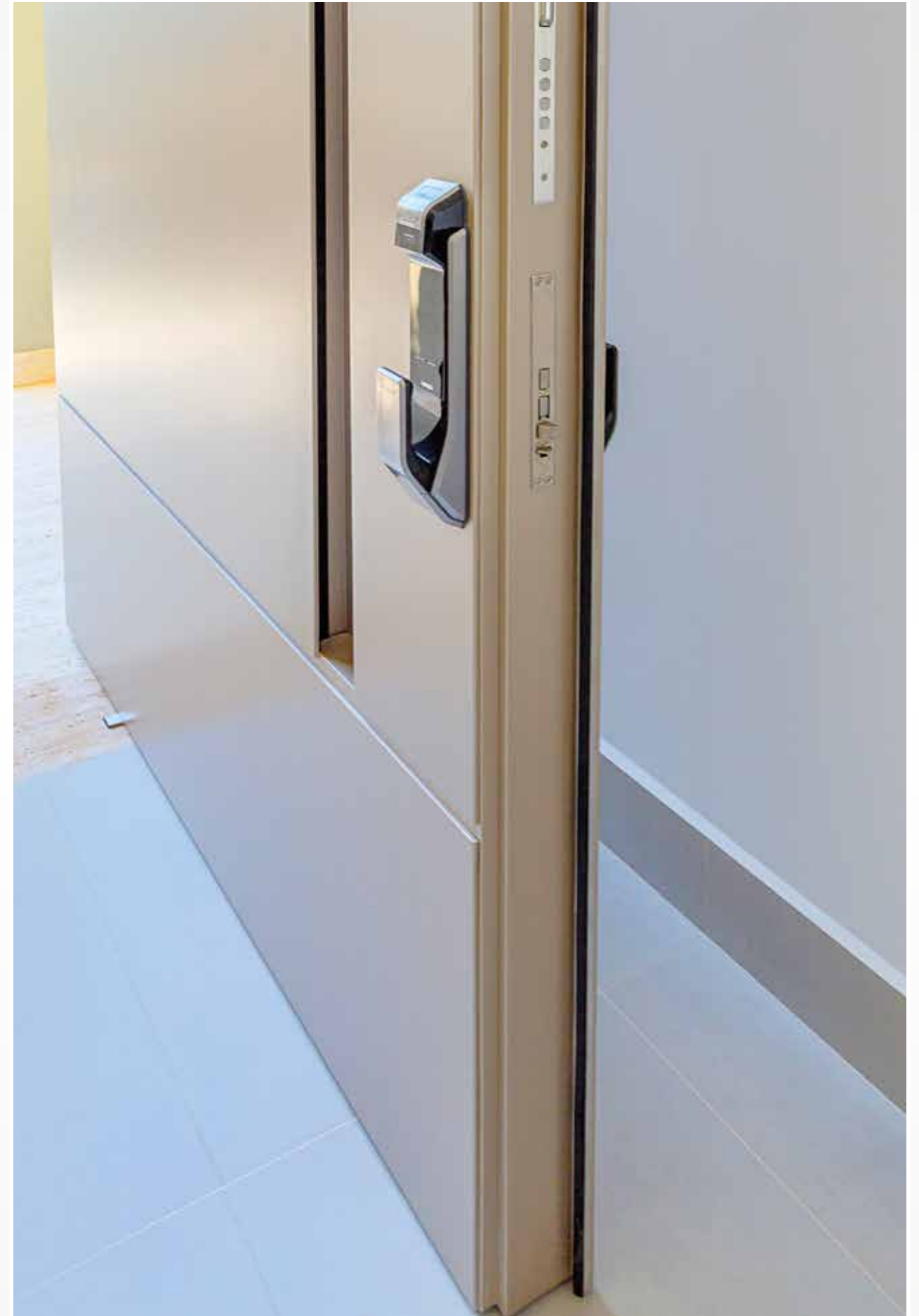
Our doors and doorstop (jamb) contain an exclusive profile designed to receive the Q-LON - high performance sealing system, imported directly from Europe and widely used in frames that require thermal, acoustic and excellent tightness solutions.



Main features and advantages:

- Materials with low conductivity property for high energy savings.
- Contamination resistant PE coating.
- Highly elastic PU foam with good recovery in all temperature ranges.
- Excellent thermal and acoustic performance.
- Rigid insert for easy adjustment and stability.
- Wide color range.

Design,
technology,
safety and
exclusivity
for your
home.



Exclusive Doors



Headquarters Pomerode, Santa Catarina

+55 (47) 3387-7500 - 0800 645 2644

Rua Hermann Koch, 261

Bairro Testo Central

CEP 89107-000

Campinas Branch, São Paulo

+55 (19) 3234-2777

Rua Fernando Baron, 475

Bairro Recanto Fortuna

CEP 13082-573



weiku.com.br



[weikudobrasil](https://www.youtube.com/weikudobrasil)

Branch (Parque Fabril) Uberlândia, Minas Gerais

+55 (34) 3238-6491

Avenida dos Siquierolis, 51

Bairro Nossa Senhora das Graças

CEP 38401-708



projettaaluminio.com



[projettaaluminio](https://www.instagram.com/projettaaluminio)

NOTE: Technical data subject to change without notice. Copyright reserved.

Your PROJETTA by WEIKU expert: